

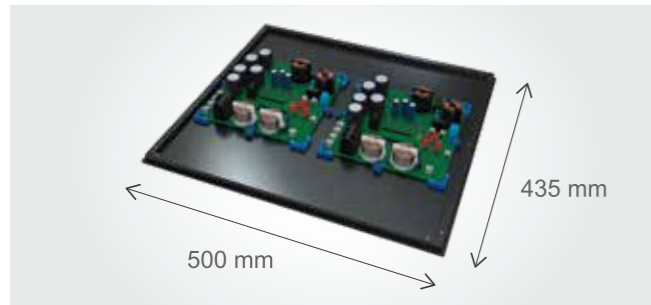


Automate manual insertion without extra processing

The machine has high compatibility with existing processes such as lines using flow pallets or lines performing batch production.

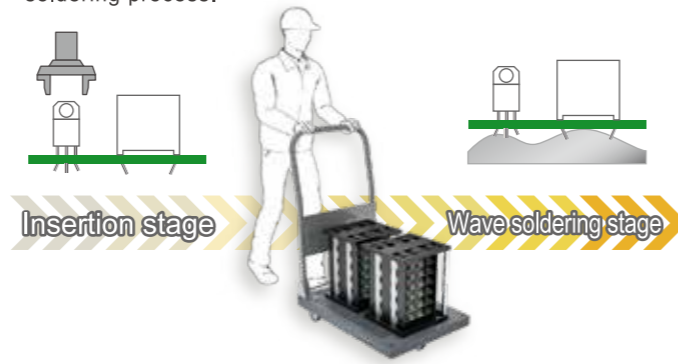
Line directly connected to a wave soldering machine

Can convey the general 16-inch reflow pallets as they are.
Easy to directly connect to the wave soldering unit.



Batch production line

By cutting and clinching, there is no concern about parts falling over or coming out when transporting from magazines. It is possible to keep stable part quality even in the wave soldering process.



High quality insertion with excellent cost performance

Modular Type Multi-purpose Automated Fabrication Machine

sFAB-SH



Production management system

The integrated production system, Nexim, is the same as that which is used Fuji's placement machines. This makes it possible to collect essential production information in a comprehensive manner.



- Traceability
- Parts out warnings
- Part verification

Specifications		sFAB-SH	
Panel size (L x W)	Single conveyor	48 x 48 to 500 x 435 mm	
Panel thickness		0.4 to 6.0mm	
Head		sH02-SH	sH08-SH
Part size		1608 (0603") to 123 x 42 mm Height 55 mm	1608 (0603") to 43 x 43 mm (diagonal 60.8 mm) Height 39.5 mm
Part weight		200 g	20 g
Thorutput*1		3,500 cph	4,800 cph
Supported parts	Axial parts	Tape width: 52 mm, Lead diameter: φ0.4 to 0.8 mm, Lead pitch: 5(5.08), 7.5(7.62), 10(10.16), 12.5(12.7), 15(15.24), 17.5(17.78), 20(20.32), 22.5(22.86), 25(25.4) mm (inch)	
	Radial parts	Lead diameter: φ0.4 to φ0.8 mm, Lead pitch: 22.5 mm or less	
	DIP / odd-form parts	Part size: Up to 123 x 42 mm	
Machine size (L x W x H)		1,000 x 2,454 x 1,665 mm	
Weight		1,530 kg	
Power		3-phase AC200 to 230 V ±10% (50/60 Hz)	
Air		0.5 MPa	
Air consumption		50 L/min (A.N.R)	

*1 Under optimum Fuji conditions.



FUJI CORPORATION

19 Chausuyama, Yamamachi, Chiryu, Aichi, 472-8686 Japan

Tel: +81-566-81-2110
Fax: +81-566-83-1140

- The contents of this catalog are subject to change without notice.
- The information in this catalog is current as of January, 2021.
© 2021 FUJI CORPORATION. All Rights Reserved.





Unparalleled part support range

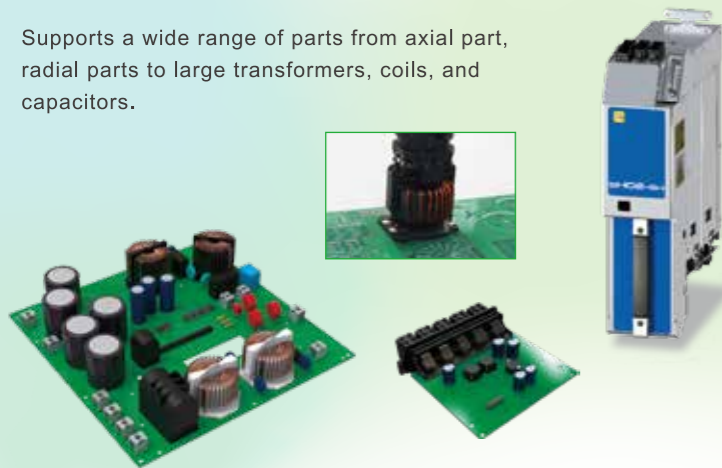
Because the SmartFAB can handle large and heavy parts which cannot be handled on other insertion machines, a wider range of assembly can be automated. This can shorten the work time and make quality stable compared to manual insertion. By replacing heads, you can use two different specifications and get the maximum effect with a minimum investment.

sH02-SH head

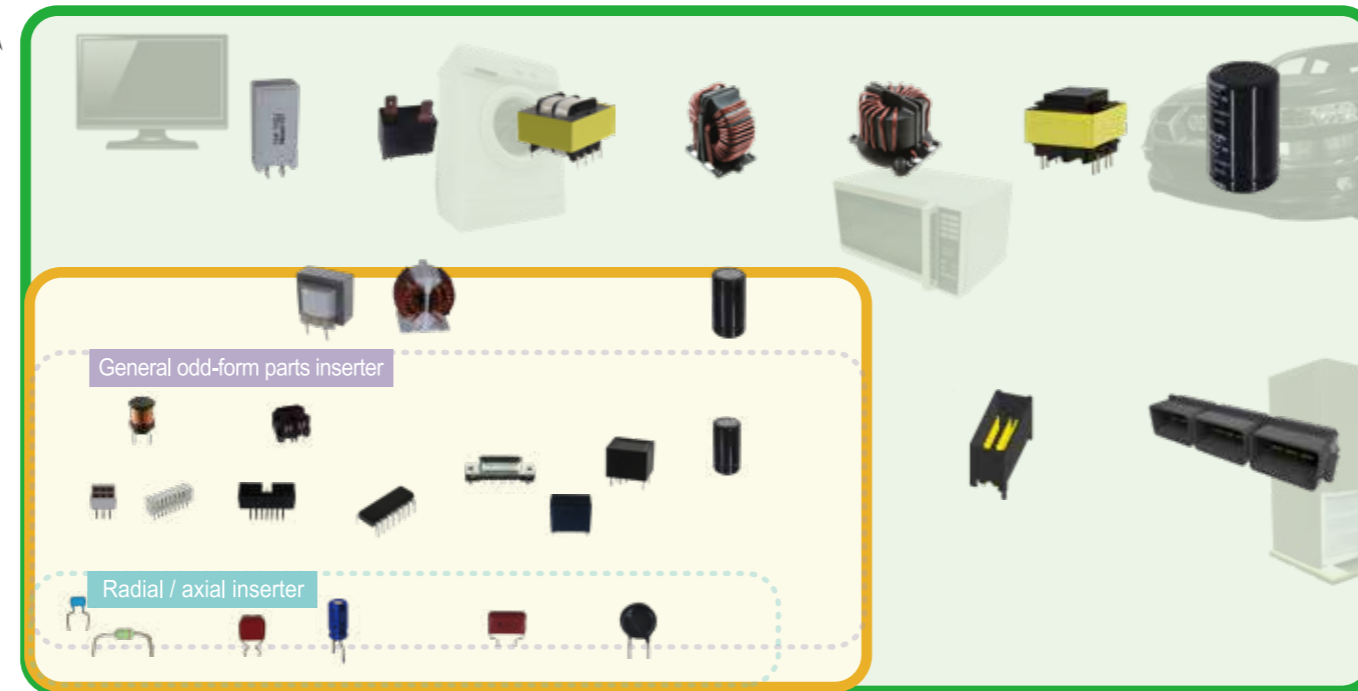
Supports large parts up to 55 mm tall and 200 g in weight

■ For large parts on power boards and automotive boards

Supports a wide range of parts from axial part, radial parts to large transformers, coils, and capacitors.



Difficulty level of automation ↑



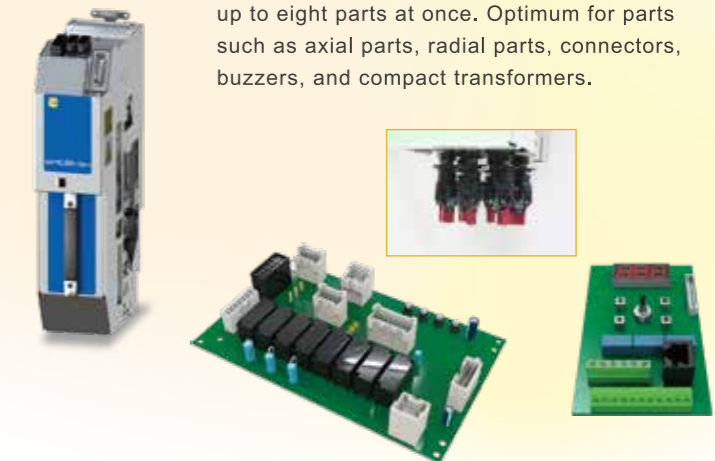
Part size →

sH08-SH head

Supports high-speed handling of small parts up to 39.5 mm tall and 20 g in weight

■ For control boards

Performs high-speed insertions by transporting up to eight parts at once. Optimum for parts such as axial parts, radial parts, connectors, buzzers, and compact transformers.



Freely change the part supply units

You can put together the optimum production line by using the various feeders and tray units based on the production type.

sMTU-LS Tray unit

Up to 48 tray part types can be set.



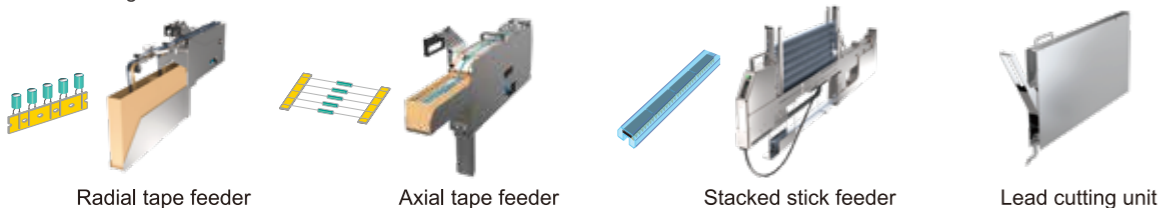
sMFU-SH Feeder unit

Up to 16 radial tape feeders can be set. When the production type is changed, it is possible to minimize line stop time by performing batch exchange.



Feeders

It is possible to set up to 32 radial feeders when the machine has an sMFU-HS and a fixed feeder pallet. It is also possible to support parts supplied in sticks and parts supplied in axial tape. Previous processes such as lead cutting are also automated.



Reliable insertion support

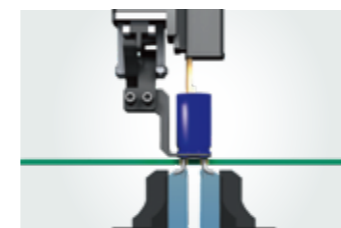
Stable insertions are possible from the functions that focus on leads.

Lead chucking



Parts are held by leads. This keeps the lead pitch stable, which in turn leads to a reduction of discarded parts.

Cut and clinch



Leads are cut and clinched from behind the panel, preventing inserted parts from falling and coming out.



Eliminate insertion defects

Greatly reduce excess costs by stopping insertion defects that cause yield loss and post-soldering repairs that frequently occur in the manual insertion process.

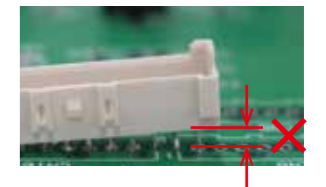
Direction mistakes

Parts are accurately inserted after checking the direction.



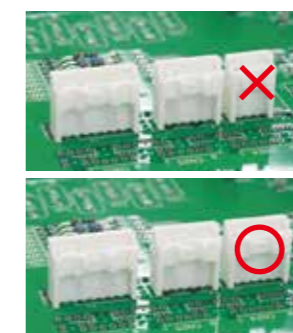
Raised parts

Parts are reliably inserted all the way.



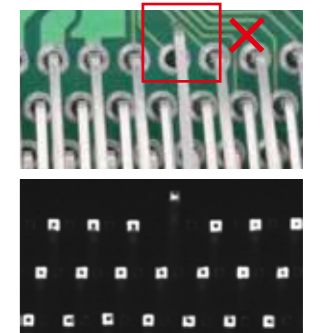
Insertion of incorrect similar parts

Parts are not mistaken for similar parts by using high-accuracy vision recognition.



Missing and bent pins

All leads are recognized even for connectors with many pins.



Image